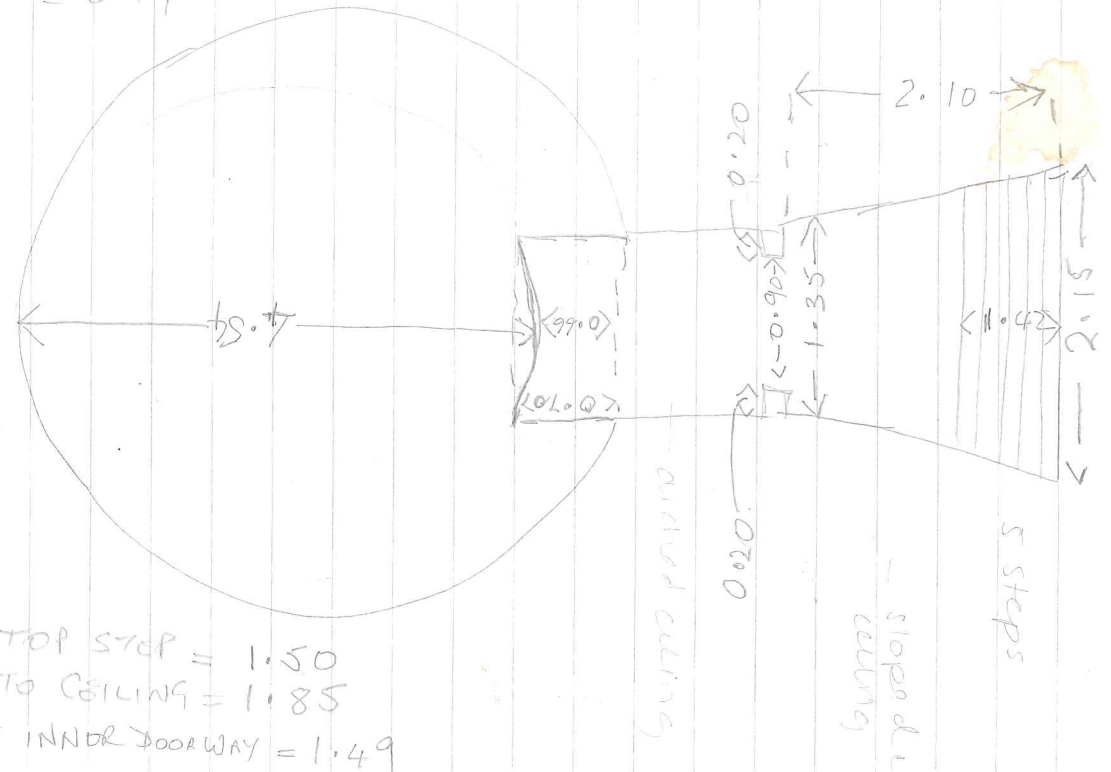


Step WIDTH = 0.27
 DEPTH = 0.19

HEIGHT OF CHAMBER
 = 4.70m TO RUBBLE

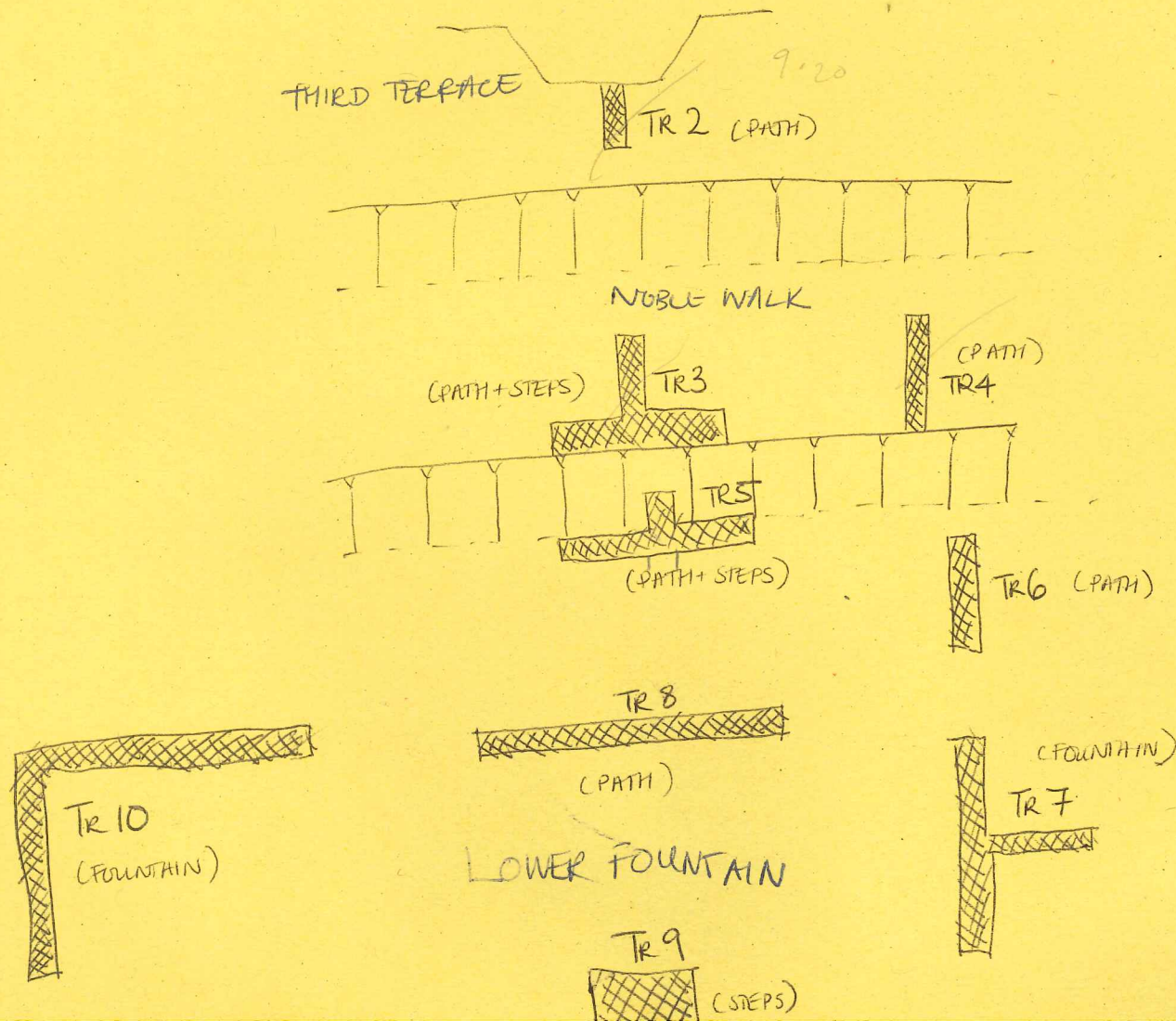
HEIGHT TOP STEP = 1.50
 TO CEILING = 1.85
 HEIGHT OF INNER DOORWAY = 1.49



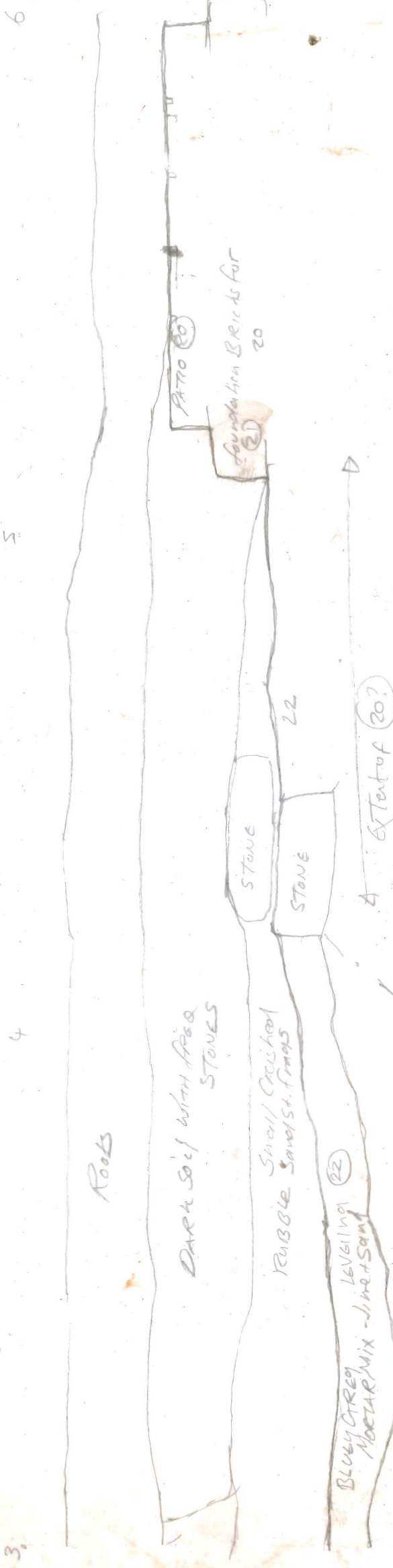
TRENCH PLAN

TR1 (PUMP HOUSE)
UPPER TERRACE

TR 11 - FOOTBRIDGE
TR 12 - BOATHOUSE
TR 13 - ROSE GARDEN
TR 14 - BUILDING



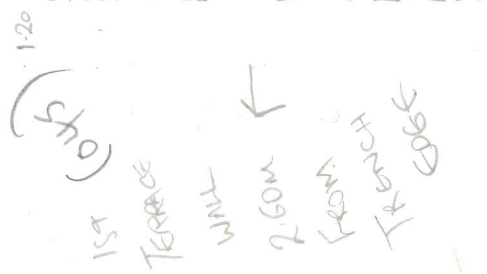
Worcester
Sheet 17 Dew 3



Natural Clayey Sand
with red tree stones
yellowish red - Pin his soil
No Bricks

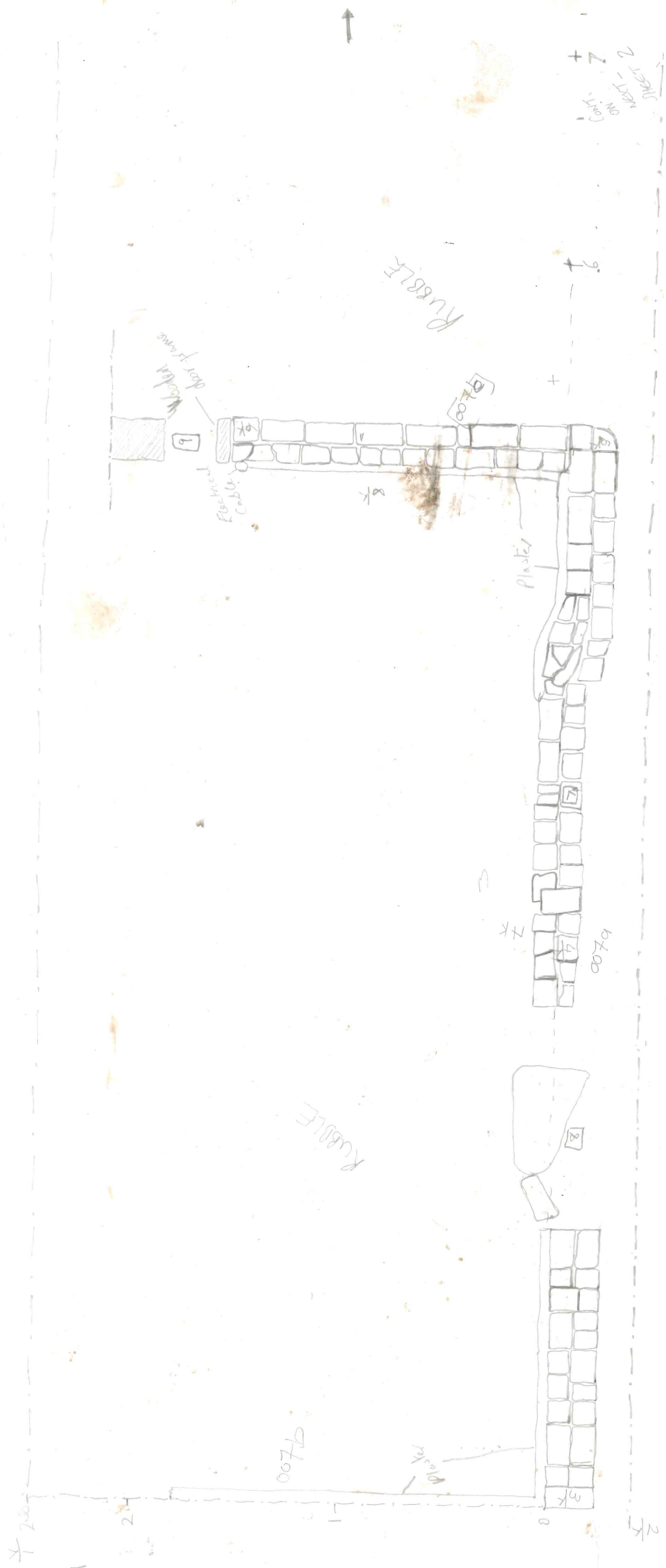
TRENCH 4
1:20 PLAN
MB
2-11-11

TRENCH 4
1:20 PLAN
MB
2-11-11



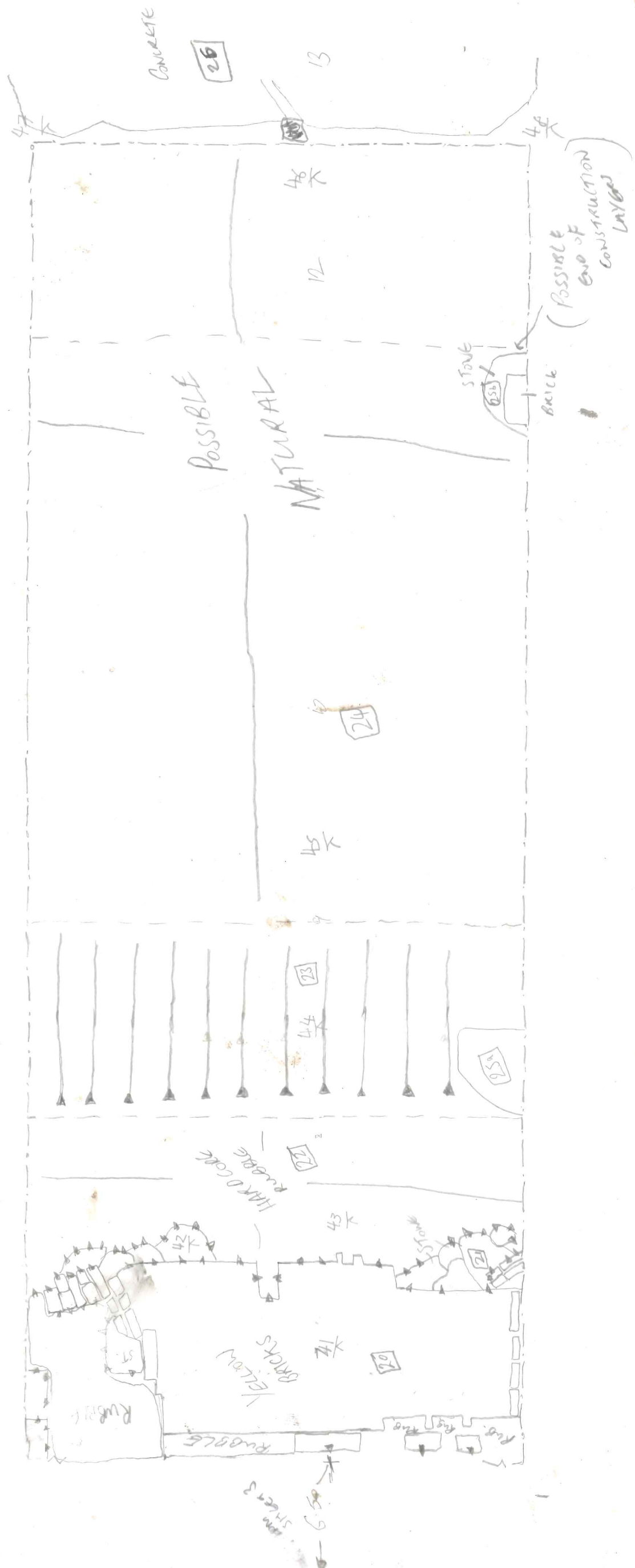
8200

RAWING 1
HEET 1
N



Sheet 2
CONT.

TRENCH 2 SHEET 4
 1.20 P.M.
 MS 28.10.11



Sheet 8 Draw 5

7

Topson (Boats)

Rubble

[19]

023

[15]

Vaulted Ceiling

(12)

Phase 1

Phase 2

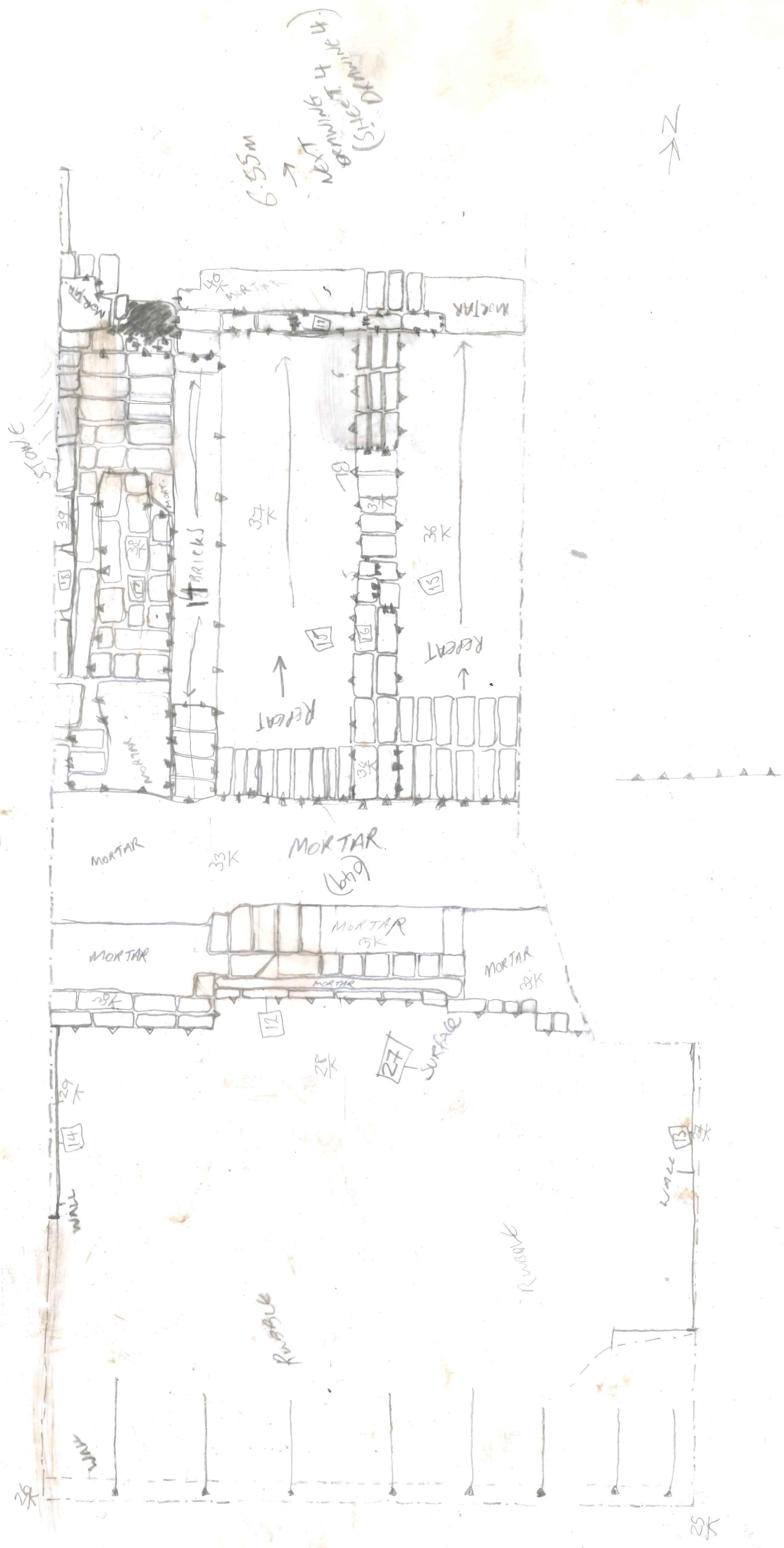
Added
Supporting
Bricks
for
Brighton
Vault

270m

Cont on Sheet 7

2.40

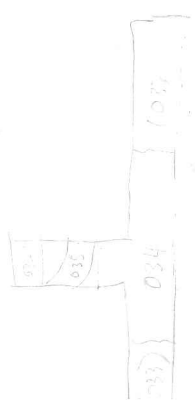
Sheet 3
Drawing 2
PLAN
1:20





(CONT) + 1

→ 16 meters from post
Trench 2
16m
Trench edge



Bottom 1.10m 70-72 MILL
+ 0.34m 1.02m

SAND AT N. END OF T7. FELD INCLUSIONS. SUB ANGULAR STONES 2.0m
CLAY.

RED/BROWN FELD INCLUSION OF SUB ANGULAR STONES (YELLOW)
TH. - WIDE -

- E. END OF T7 UNITS (0.23). POSS. CLAY FELD.

SANDY AT E. END OF T7. POSS. ORNATE PEARL
ANGULAR SANDSTONES 2.0-1.0m.

TOILET FOR SLEAVE HOLE (WATER) AT N. END OF T7 (0.74 x 0.52 x 0.11m)
0.11m diam.

WATER PIPE. 0.60m x 0.48m. HM ORNATE BRICKS. LGTH. 0.23 x 0.11 x 0.08.
SIDP TAP FOR E. FOUNDATION. 2.10m DEEP.

UNLOCATING N. S. SIDES OF (0.23). 0.18 diam. UP PDS CAPPED BY
(0.26m) ON TOP WAS LOCK



LAR 10 (0.55). N. END OF T7. POSS. REMAINS OF FELD FELD

(SAND) AT N. END OF T7.2. CAME AS 0.23. C. N. N. N. (0.3)
4.11m NAY.

E. RED/BROWN. FELD INCLUSIONS. SUB ANGULAR FELD (YELLOW)
CENTRE + E. END OF T7. SAME PARTS. 2.0m DEEP IN T7. T7. T7.



ROCK SAMPLES, IT

(054) BLOCKS OF ORGANIC TOP SOIL. TELL P.A.L. 2.0-1.0m DEEP

(055) COMBINED CLAY, ELONG. SAND, SIFT BELTED (0.5). FELD
INCLUSIONS OF HM BRICK + SLATL 2.0-1.0m DEEP.

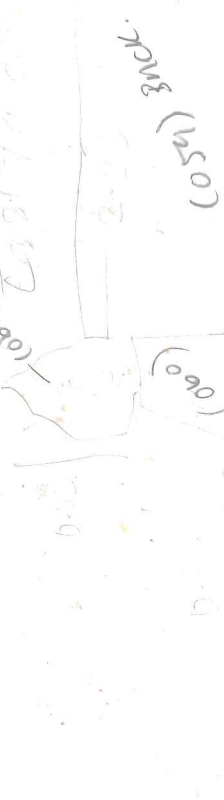
(056) 'U' SHAPED BRICK NAY. HM BRICK 0.24 x 0.12 x 0.12. E. END
SAND. 2.0-1.0m DEEP. FELD. (CONT)
2.0-1.0m DEEP. WIDE. N. ELEVATION. COMBINS 4 RECL. 0.12 x 0.12 x 0.12
N - 3.02
E - 2.08
W - 1.1

POSS FITTING FOR SEAT?

(057) CUT (FOUNDATION) FOR (056) PICKED UP IN SLOT
0.10 WIDE. FELD. N. END. COMBINS GELLY BROWN SHT FILL
WITH WELD OF GELLY ACRESID. (058).

NB - Truncated in NW corner

FOSSILS, IT



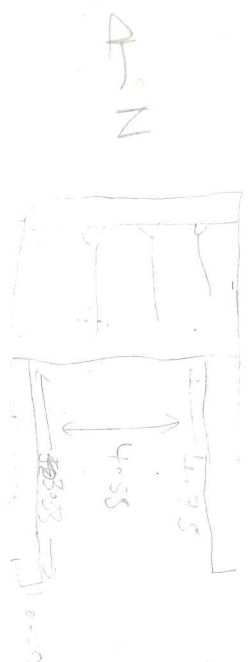
(059) 3m x 1.1m



(060) 3m x 1.1m

(046) GREY/BEIGE WALL OF TOWER/STAIR POOL - 0.60M DEEP. FEELING LIKE A STAIRCASE
OR SUBTLE SHADES. 20-30cm BROWN TILES. (MAYBE 1.5m x 1.5m)

BOAT HOUSE



(047) W. WALL OF BOAT HOUSE 0.49M WIDE, EXC. LENGTH 3.33. HANDMADE BRICK (0.23x0.11x0.07)
4.35m WIDE, 10 HATCH (1.1m x 0.11m) EQW BOND.

(048) E. WALL - SAME AS ABOVE.

(049) N. WALL

(050) - BEIGE LIME LITTLE. 0.30M. 0.40 THICK.

(051) GRAY BEIGE SLT - WATER LOGGED / FEELING LIKE A STAIRCASE. SLATE TILES, BRICKS.
STONE BOND. (MAYBE 1.5m x 1.5m)

(052) - ~~YELLOW~~ YELLOW / CLAY LAYER BELOW (051)

(053) BRICK PLINTH EXPOSED WITHIN LOT A. SITS BELOW (047) 11M 8. HEMLOCK
PROJECTS 0.14. BRICK 0.11 WIDE 7 EXPOSED.

(054) Met.

(065) 'L' shaped wall.

(054) Boat lift.



Top level 1 TBM = 100

BS1 = 1.16

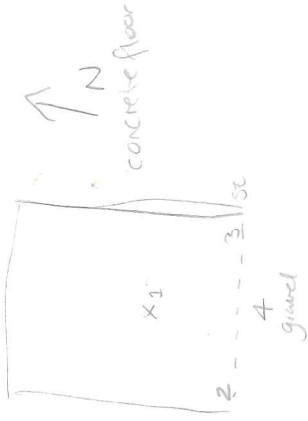
LOC = 101.16

PUMP HOUSE FS1 = 0.75

2 = 1.00

3 = 0.98

4 = 1.07



TRAVERSE

TBM1 = 100

BS = 0.18

HO1 = 100.18

FS TO NEW TBM2 = 3.83 RL for TBM2 = 96.35

96.35

TBM2 = 100

BS = 1.65

HO1 = 98.0

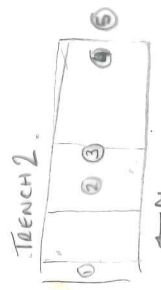
FS 1 = 3.43

2 = 3.75

3 = 3.77

4 = 3.94

5 = 3.57



2 is LOWER SURFACE OF PATH

TRAVERSE

TBM = 96.35

BS = 1.65

HO1 = 98.0

FS TO TBM3 = 4.85 RL for TBM3 = 93.15

TBM3 = 93.15

BS = 0.59

HO1 = 93.74

FS TO NEW TBM4 = 4.96 RL for TBM4 = 88.78

TBM = 88.78

BS = 1.51

HO1 = 90.29

FS 1 = 1.46

2 = 1.72

3 = 1.69

4 = 1.84



TBM1 = 100
TBM2 = 96.35
TBM3 = 93.15
TBM4 = 88.78
TBM5 = 85.45
TBM6 = 84.08

TRAVERSE

TBM = 88.78

BS = 1.51

HO1 = 90.29

FS TO TBM5 = 4.84

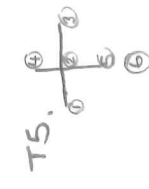
85.45

RL for TBM5 = 85.45

TBM5 = 85.45

BS = 0.41

HO1 = 85.86



FS 1 = 1.45

2 = 1.19

3 = 1.18

4 = 0.37

5 = 1.28

6 = 1.12

7 = 1.25

8 = 1.35

9 = 1.40

10 = 1.48

11 = 1.52

12 = 1.61

13 = 1.65

14 = 1.66

15 = 1.73

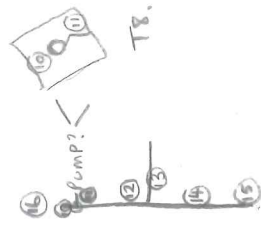
16 = 1.23

17 = 2.31

18 = 2.36

19 = 1.48

20 = 1.70



22 = 1.93

23 = 1.71

TRAVERSE TO TBM6

FS = 1.78 RL for TBM6 = 84.08

FOUNDAION

TBM = 84.08

BS = 1.45

HO1 = 85.53

T10

20 = 2.49

11 = 2.19

12 = 2.19

13 = 1.90

14 = 2.17

15 = 2.15

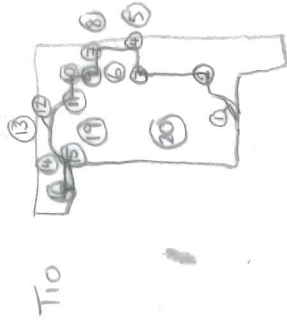
16 = 2.15

17 = 2.13 - TRENCH NEAR 16

18 = 1.8

19 = 2.07

20 = 2.49



old warsley
+ little Hulton
Am Mangalan.

N
W + E
S

SINGLE STOREY STABLES.

Stone State
S. I. Engle
Rd 9
W. Va.

Worley

Clivehunts@btinternet.com
Purchase
Invoice address
Rete

→
N

TRENCH 4 DRAWING 3
PLAN 1:20 SHEET 5

MB 1.11.11

→ N

TRENCH EDGE

1m ↑

