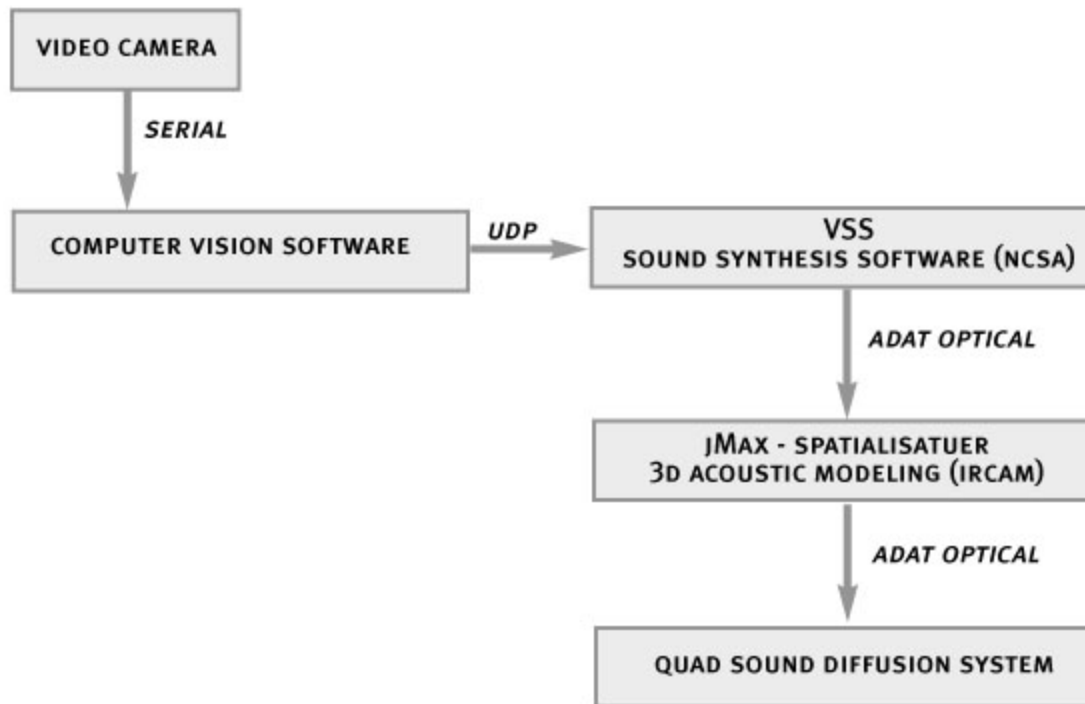


VOICES IN RUINS

COMPUTER VISION CONTROL OF SOUND SYNTHESIS



VOICES IN RUINS

CYBERIAN TELEPRESENCE

C

= COMPUTER VISION SYSTEM

A

= AUDIO 4-CHANNEL SYSTEM

D

= DESKTOP DISPLAY

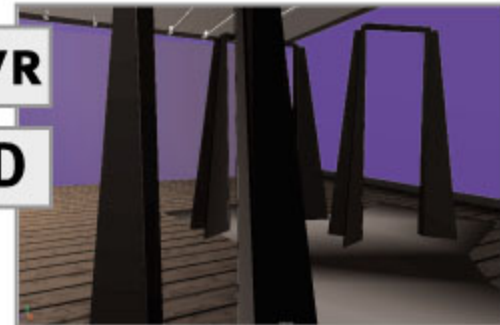


REAL VOICES IN RUINS

MOVEMENT-BASED
CONTROL

VR

D



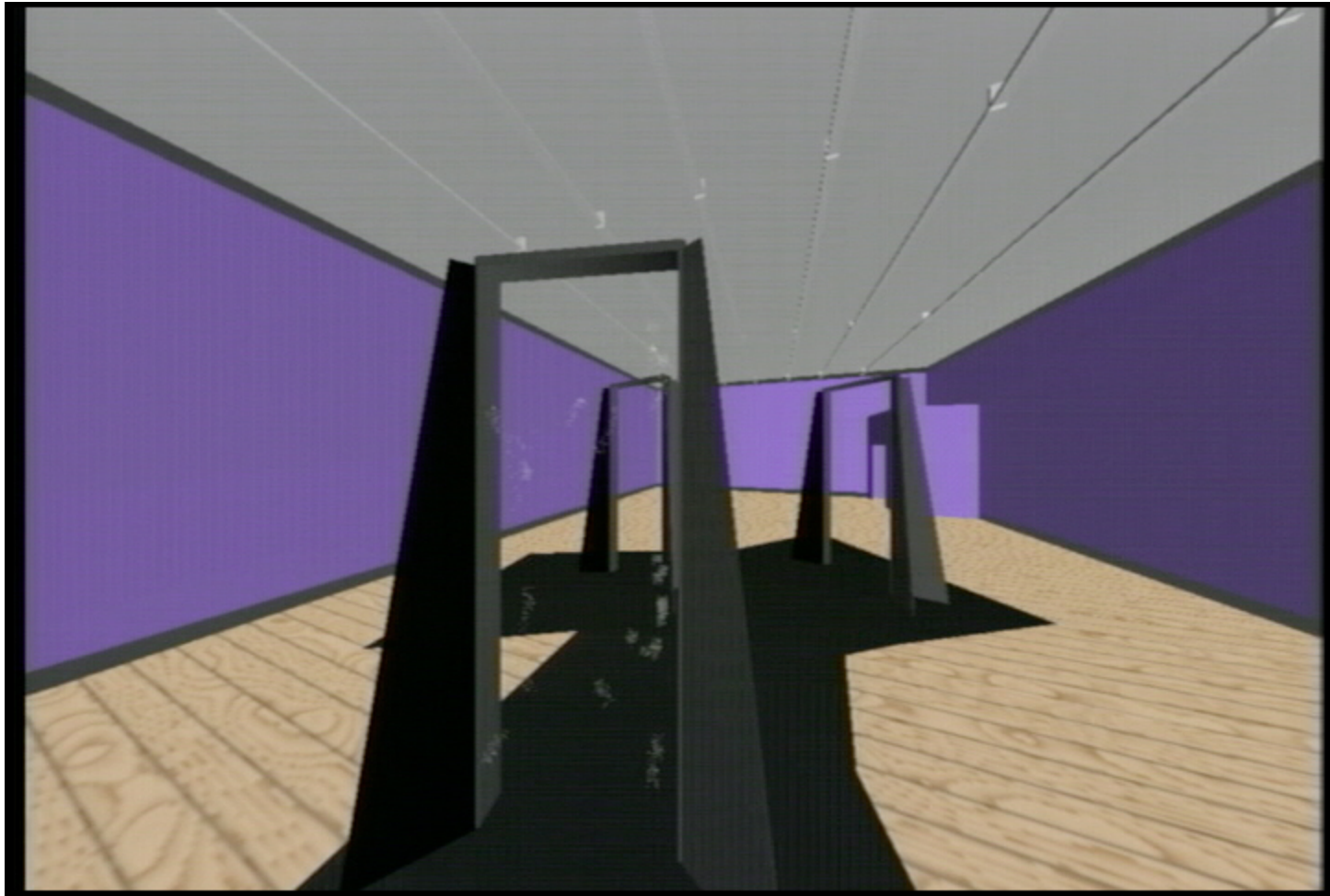
VIRTUAL VOICES IN RUINS



Cyberian visitors use telepresence VR to visit Voices gallery



Video streaming orients Cyberian visitors to actions in gallery.



Yellow particle trails in doors indicate activation in gallery

